



## Oxfordshire's 10 most deprived wards

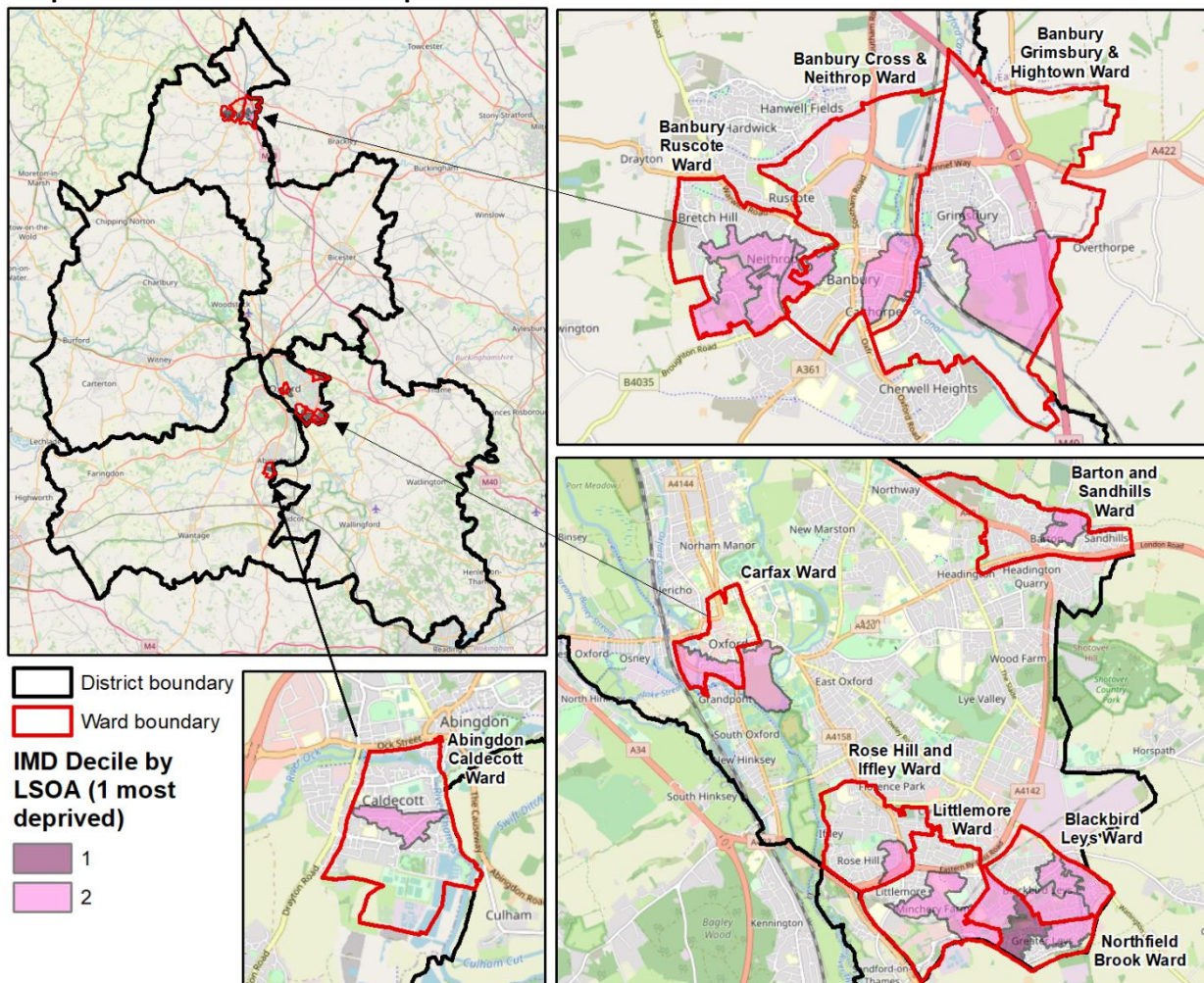
*This JSNA Bitesize provides an overview of the '10 most deprived wards' in Oxfordshire according to the 2019 English Indices of Deprivation*

- The 2019 English Indices of Deprivation ranks each of England's 32,844 LSOAs (Lower-layer Super Output Areas) by deprivation and gives each one a decile depending on which 10% band it is within.
- The overall deprivation is the Index of Multiple Deprivation (IMD).
- Oxfordshire contains 17 (out of 407) LSOAs within the 2 most deprived IMD deciles – deciles 1 and 2.
- These are mostly contained within 10 wards – 1 in Abingdon, 3 in Banbury and 6 in Oxford.

### 10 most deprived wards and population characteristics

Area	Population (mid-2018)	Median age (mid-2018)	Non-White British (%) Census 2011
<b>Oxfordshire</b>	<b>687,524</b>	<b>39.8</b>	<b>16.4</b>
<b>Abingdon Caldecott</b>	7,897	40.8	12.8
<b>Banbury Cross and Neithrop</b>	10,247	37.6	23.6
<b>Banbury Grimsbury and Hightown</b>	10,184	35.6	27.8
<b>Banbury Ruscote</b>	10,408	35.8	18.7
<b>Barton and Sandhills</b>	7,018	35.4	34.0
<b>Blackbird Leys</b>	5,840	35.2	34.7
<b>Carfax</b>	6,750	22.9	40.1
<b>Littlemore</b>	6,549	35.3	28.6
<b>Northfield Brook</b>	6,429	34.8	31.6
<b>Rose Hill and Iffley</b>	6,408	37.7	37.9

### Map of Oxfordshire's 10 most deprived wards



## Domains of deprivation for the deprived LSOAs (IMD decile 1 or 2) by ward

Lower Super Output Area (ward name and final 3 digits of LSOA name)	IMD	Income	Employment	Education	Health	Crime	Barriers to Housing & Services	Living Environment	IDACI	IDAOPi
<i>Average of LSOAs in Oxfordshire</i>	<b>8</b>	<b>8</b>	<b>8</b>	<b>7</b>	<b>8</b>	<b>8</b>	<b>5</b>	<b>6</b>	<b>7</b>	<b>8</b>
Banbury Cross & Neithrop 04A	2	2	2	3	1	2	6	2	3	3
Banbury Cross & Neithrop 03D	2	3	2	2	3	3	5	5	3	2
Banbury Ruscote 05A	2	3	3	1	2	3	7	6	4	2
Banbury Ruscote 05B	2	2	2	1	1	1	7	7	1	5
Banbury Ruscote 05F	2	2	2	1	2	1	6	6	2	2
Barton and Sandhills 05B	2	2	3	1	3	4	5	6	2	2
Blackbird Leys 17A	2	3	3	1	3	3	1	7	3	6
Blackbird Leys 17B	2	2	2	1	2	4	4	7	2	3
Blackbird Leys 18A	2	2	3	1	3	2	4	7	1	3
Carfax 08B	2	5	4	3	1	3	2	1	3	1
Littlemore 16A	2	2	3	2	3	2	4	6	1	4
Northfield Brook 17D	2	3	3	2	3	1	3	4	3	2
Northfield Brook 18B	1	2	2	1	2	2	4	8	2	2
Northfield Brook 18C	2	2	2	1	2	5	2	9	2	2
Rose Hill and Iffley 16E	2	2	2	1	2	4	2	4	2	1
Abingdon Caldecott 08C	2	2	3	1	4	7	9	8	2	3
Banbury Grimsbury & Hightown 04G	2	2	2	1	2	5	5	6	3	1

■ 1-2  
 ■ 3-5  
 ■ 6-10

### NOTE

The IMD is a weighted combination of seven domains of deprivation:

- Income Deprivation (22.5%)
- Employment Deprivation (22.5%)
- Education, Skills and Training Deprivation (13.5%)
- Health Deprivation and Disability (13.5%)
- Crime (9.3%)
- Barriers to Housing and Services (9.3%)
- Living Environment Deprivation (9.3%)

There are also two supplementary indices:

- Income Deprivation Affecting Children Index (IDACI)
- Income Deprivation Affecting Older People Index (IDAOPi)